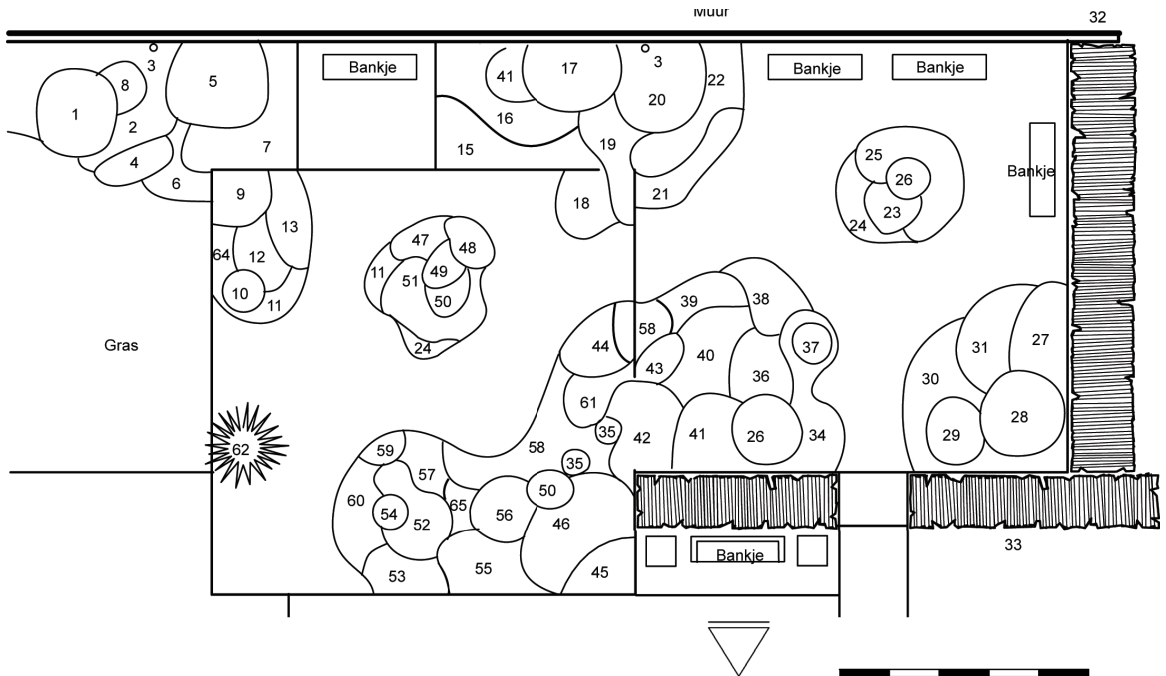


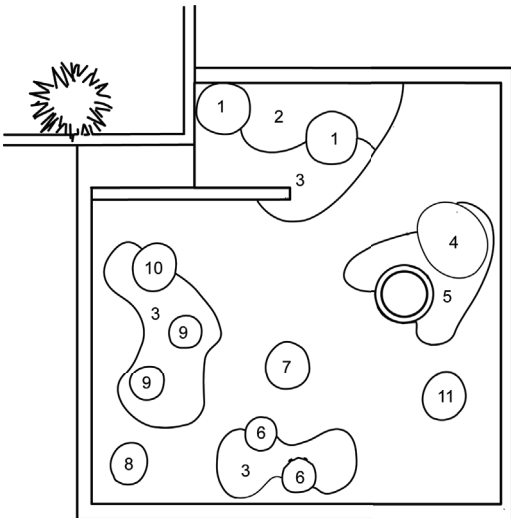
23. Bloementerras



1. *Deutzia hybrida* 'Mont Rose'
2. *Paeonia*
3. *Vitis coignetiae*
4. *Viola sororia* 'Albiflora' +
Pentaglottis sempervirens +
Lunaria annua
5. *Rosa* 'Smarty'
6. *Brunnera macrophylla*
7. *Hosta fortunei* 'Hyacinthina'
8. *Aruncus dioicus*
9. *Lathyrus vernus*
10. *Sorghastrum nutans*
11. *Sedum spurium* 'Schorbuser Blut'
12. *Iris* 'Ambassadeur'
13. *Geranium sanguineum* 'Glenluce'
15. *Geranium cantabrigense* 'St. Ola'
16. *Astrantia maxima*
17. *Deutzia chunii*
18. *Bergenia* 'Silberlicht'
19. *Campanula poscharskyana*'
20. *Eupatorium maculatum*
21. *Potentilla tridentata* 'Nuuk'
22. *Thalictrum delavayi* (+ boshyacint)
23. *Anemone tomentosa* 'Albadura'
24. *Viola labradorica*
25. *Geranium macrorrhizum* 'Spessart'
26. *Miscanthus sinensis* 'Kleine Silberspinne'
27. *Weigela florida* 'Purpurea'
28. *Hydrangea aspera*
29. *Symphoricarpos doorenbosii*
'Mother of Pearl'
30. *Bergenia* 'Morgenröte'
31. *Persicaria amplexicaulis* 'Inverleith'
32. *Acer campestre* - haag
33. *Ilex aquifolium* - haag
34. *Geranium himalayense* 'Gravetye'
35. *Papaver orientale* 'Karine'
+ *Achillea millefolium* 'Red Velvet'
36. *Echinacea purpurea* 'The King'
37. *Acanthus spinosus*
38. *Lavandula angustifolia*
39. *Sedum* 'Robustum'
40. *Salvia nemorosa* 'Mainacht' + *Centaurea scabiosa*
41. *Echinops ritro* 'Veitch's Blue'
42. *Aster lateriflorus* 'Horizontalis'
43. *Pulsatilla vulgaris*
+ *Delphinium* 'Elmfreude'
44. *Saponaria lempergii* 'Max Frei'
45. *Campanula lactiflora* 'Loddon Anna'
46. *Buddleja davidii* 'Black Knight'+
Aster cordifolius hybr. 'Little Carlow'
47. *Iberis sempervirens* 'Snowflake'

(Vervolg bloementerras)

- 48. *Molinia caerulea* 'Moorhexe'
- 49. *Salvia* 'Serenade'
- 50. *Lathyrus vernus*
- 51. *Veronica* 'Madame Mercier'
+ *Rosa* 'Lavender Dream'
- 52. *Strobilanthes atropurpureus*
- 53. *Gypsophila* 'Rosenschleier'
- 54. *Yucca filamentosa*
- 55. *Knautia macedonica*
- 56. *Delphinium* 'Piccolo'
- 57. *Erodium absinthoides*
- 58. *Calamintha nepeta*
- 59. *Iris* 'Cyanea'
- 60. *Erodium variabile* 'Bishop's Form'
+ *Geranium cinereum* 'Giuseppe'
+ *Viola cornuta* 'Martin'
- 61. *Liatris spicata* + *Agastache* 'Black Adder'
- 62. *Abies balsamea* 'Nana'
- 64. *Ajuga reptans*
- 65. *Lathyrus vernus*



- 1. *Miscanthus sinensis* 'Ferner Osten'
- 2. *Sedum* 'Matrona'
- 3. *Vinca minor*
- 4. *Phyllostachys aureosulcata* f. *spectabilis*
- 5. *Luzula sylvatica*
- 6. *Calamagrostis acutiflora* 'Karl Foerster'
- 7. *Molinia arundinacea* 'Transparent'
- 8. *Panicum virgatum* 'Rehbraun'
- 9. *Pennisetum alopecuroides* 'Hameln'
- 10. *Spodiopogon*
- 11. *Calamagrostis brachytricha*

