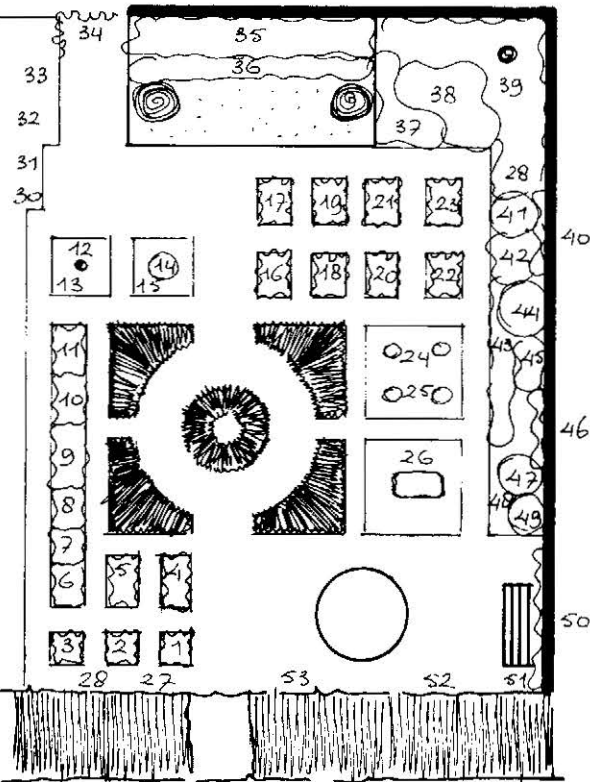


Notities:



0 1 2 3 M

25 KRUIDENTUIN

- | | | | |
|----|------------------------------------|----|--|
| 1 | Winterpostelein | 38 | Japane bottelroos |
| 2 | Bieslook | 39 | Vlier |
| 3 | Valeriaan | 40 | Kervel |
| 4 | Wijnruit | 41 | Alsem |
| 5 | Salie | 42 | Karwij |
| 6 | Zuring | 43 | Fritillaria imp. Lutea
daarna: wilde goudsbloem |
| 7 | Pimpernel | 44 | Venkel |
| 8 | Wouw (Reseda luteola) | 45 | Meekrap |
| 9 | Heemst (Althaea officinalis) | 46 | Moerbei |
| 10 | Mierikswortel | 47 | Cichorei |
| 11 | Borago | 48 | Kamille |
| 12 | Zwarte bes op stam | 49 | Zeekool |
| 13 | Gamander | 50 | Vijg |
| 14 | Citroenkruid | 51 | Pentaglottis sempervirens |
| 15 | Marjolein (Origanum compactum) | 52 | Tripmadam |
| 16 | Bonekruid (Satureja montana) | 53 | Vrouwemantel |
| 17 | Tym | 54 | Buxus sempervirens |
| 18 | Lavendel | | |
| 19 | Hyssop | | |
| 20 | Citroenmelisse | | |
| 21 | Pepermunt | | |
| 22 | Kruizemunt | | |
| 23 | Dragon | | |
| 24 | Kardoer | | |
| 25 | Driekleurig viooltje | | |
| 26 | Wilde aardbei (Fragaria vesca) | | |
| 27 | Lieve Vrouwebedstro | | |
| 28 | Kervel | | |
| 29 | Groot hoefblad | | |
| 30 | Lavas | | |
| 31 | Roomse kervel | | |
| 32 | Engelwortel | | |
| 33 | Marjolein | | |
| 34 | Rosa multiflora | | |
| 35 | Alant | | |
| 36 | Oost Indische kers | | |
| 37 | Wollige munt (Mentha rotundifolia) | | |